

UCM HBS-ME Bldg.

**HSRI (#52) Biological-Chemical Analysis Lab + (#54) Wet Air Lab
Agenda for 7 April Programming Breakout Meeting**

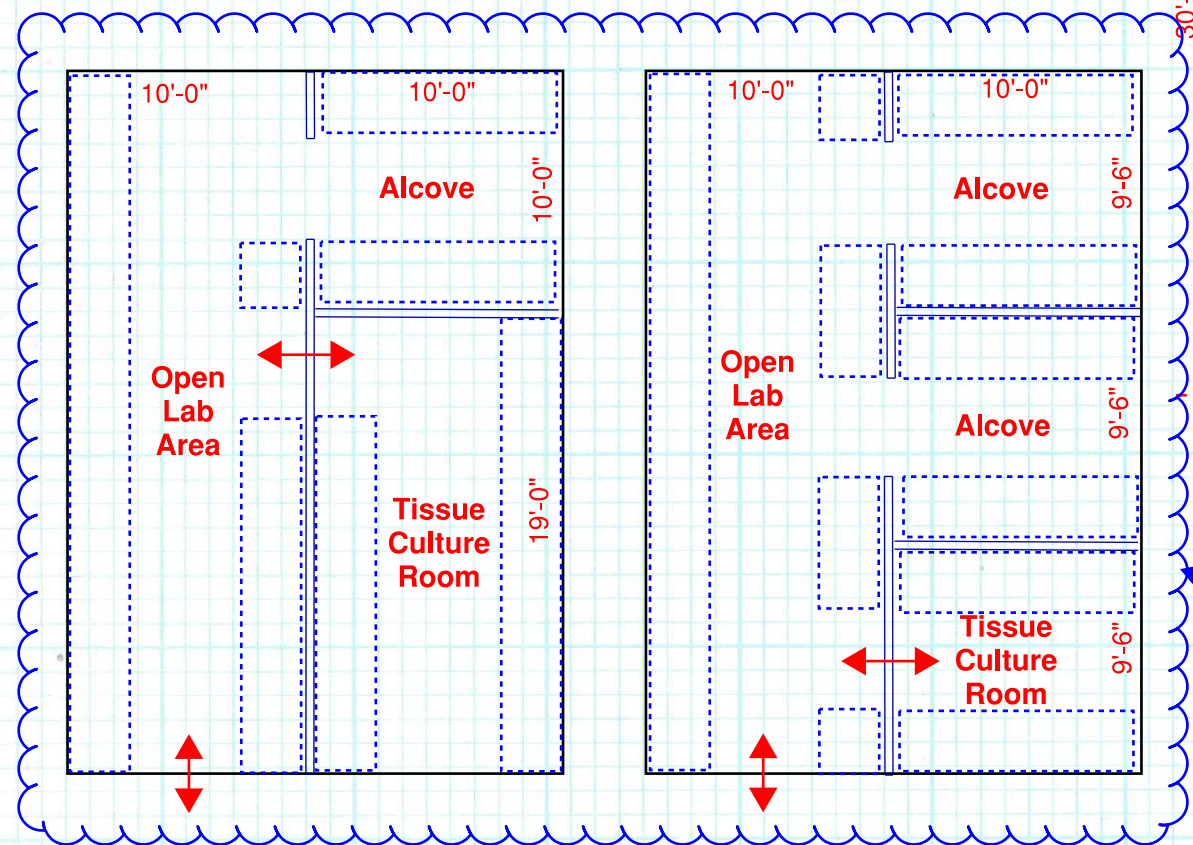
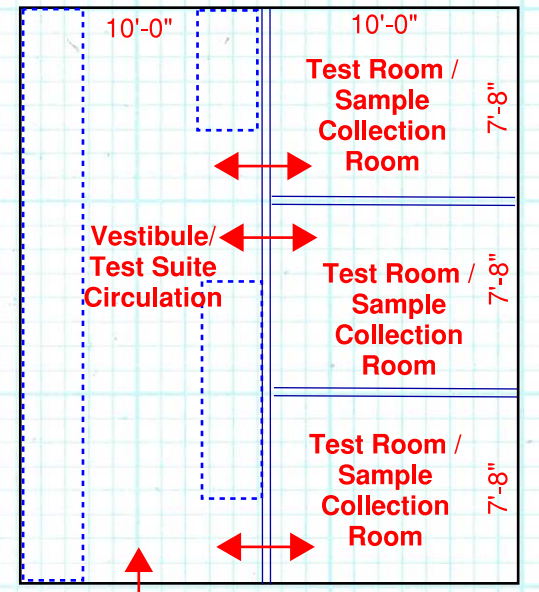
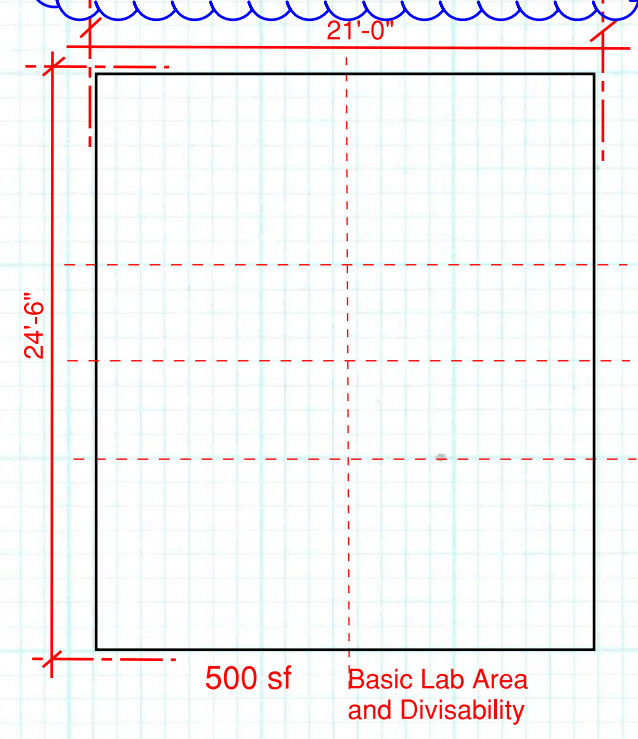
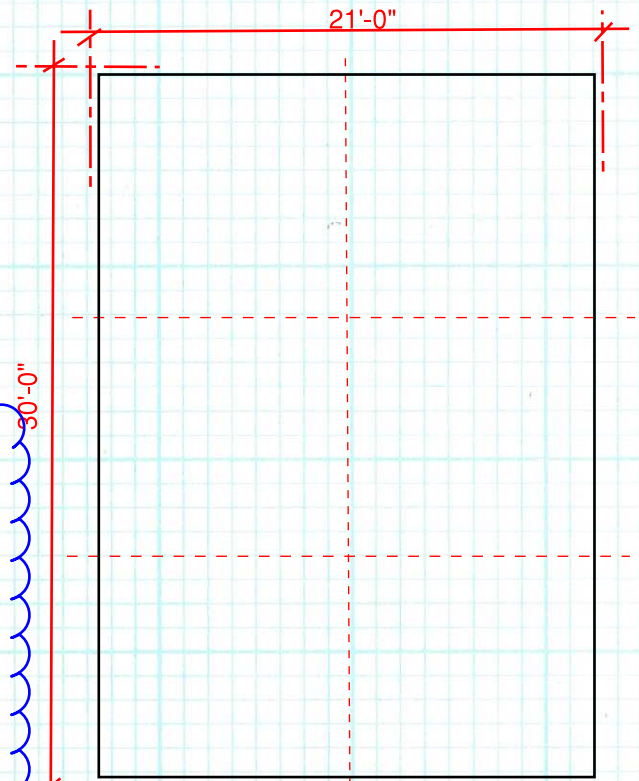
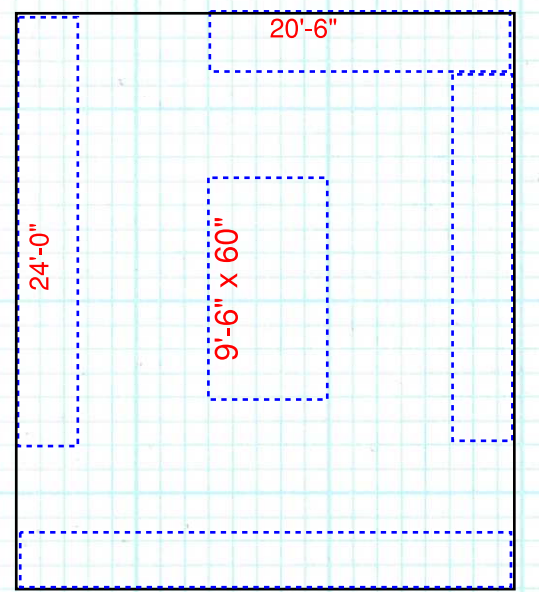
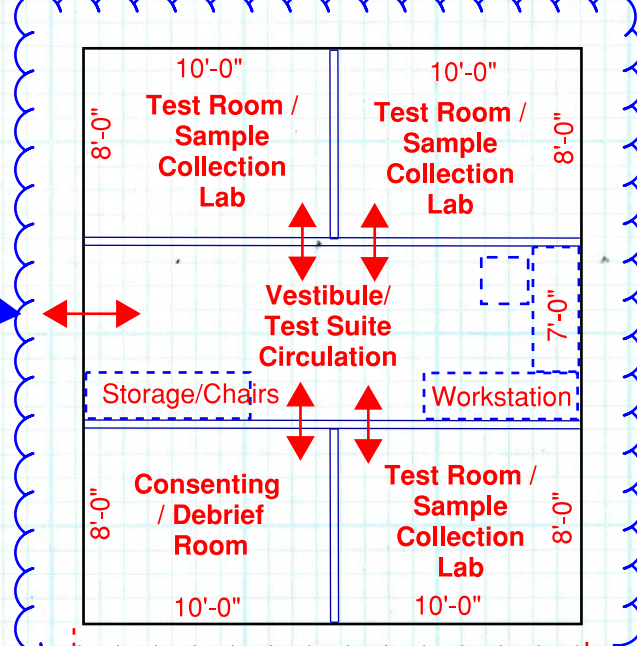
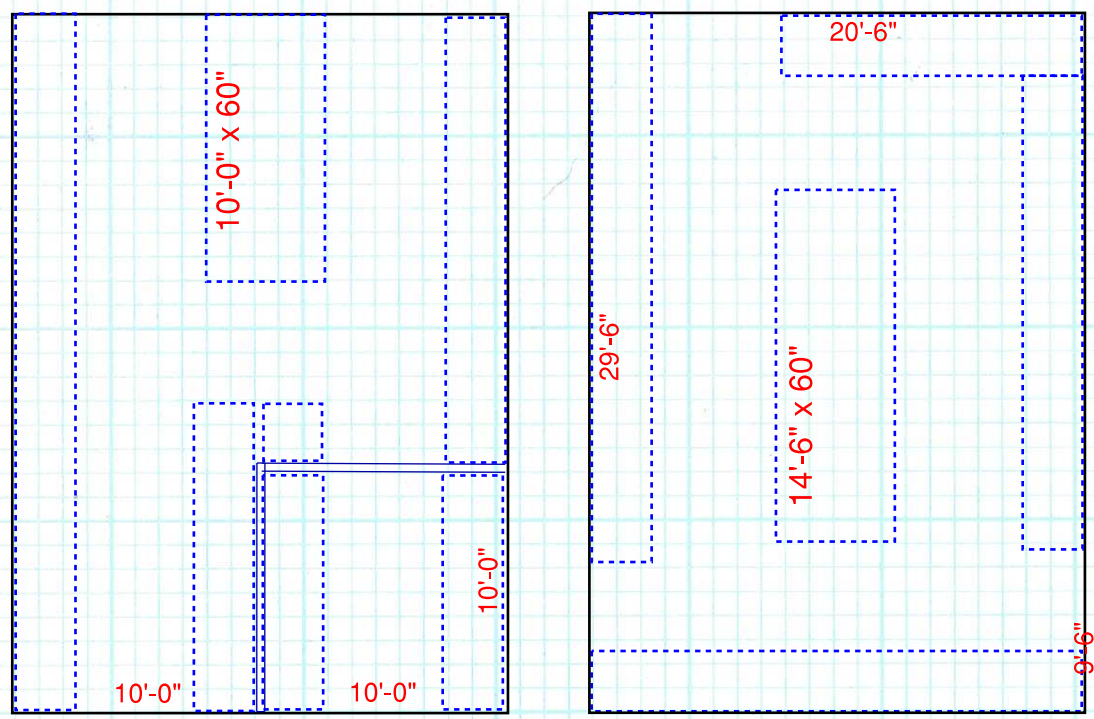
1 April 2021
GL Planning & Design, Inc.
Page 1

Agenda:

1. Review Notes from Previous Meeting and get stakeholder comments.
2. Review sketch plan for the labs.

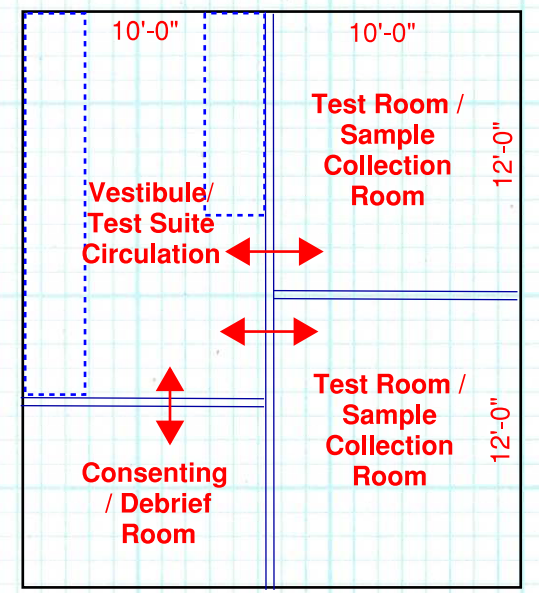
End of Agenda

This lab model was added after the meeting to attempt to find other ways to best match the HSRI vision for the Wet-Air Lab. Options will be developed for options that accommodate a Consenting / Debrief Room



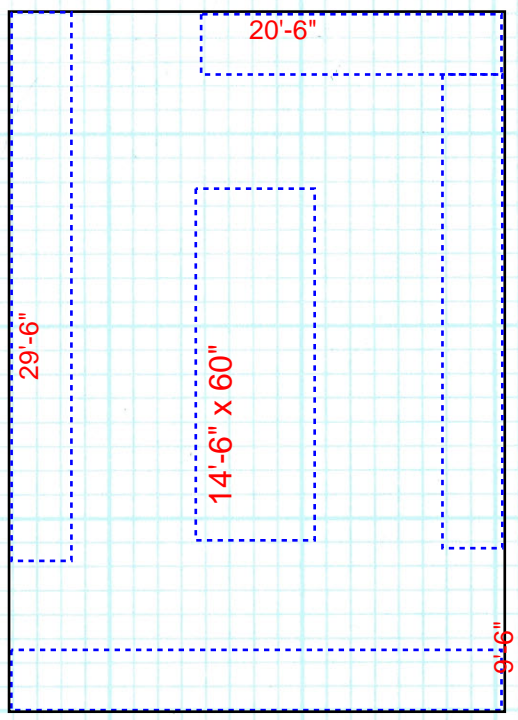
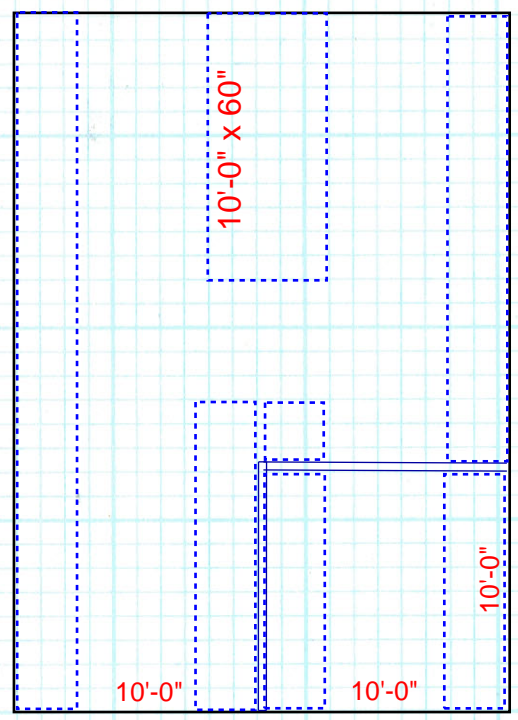
These were the two lab models which most closely matched the HSRI vision for the Biological - Chemical Analysis Lab. Options will be developed for each of the two models

These were the two lab models which most closely matched the HSRI vision for the Wet-Air Lab. Options will be developed for options that accommodate a Consenting / Debrief Room

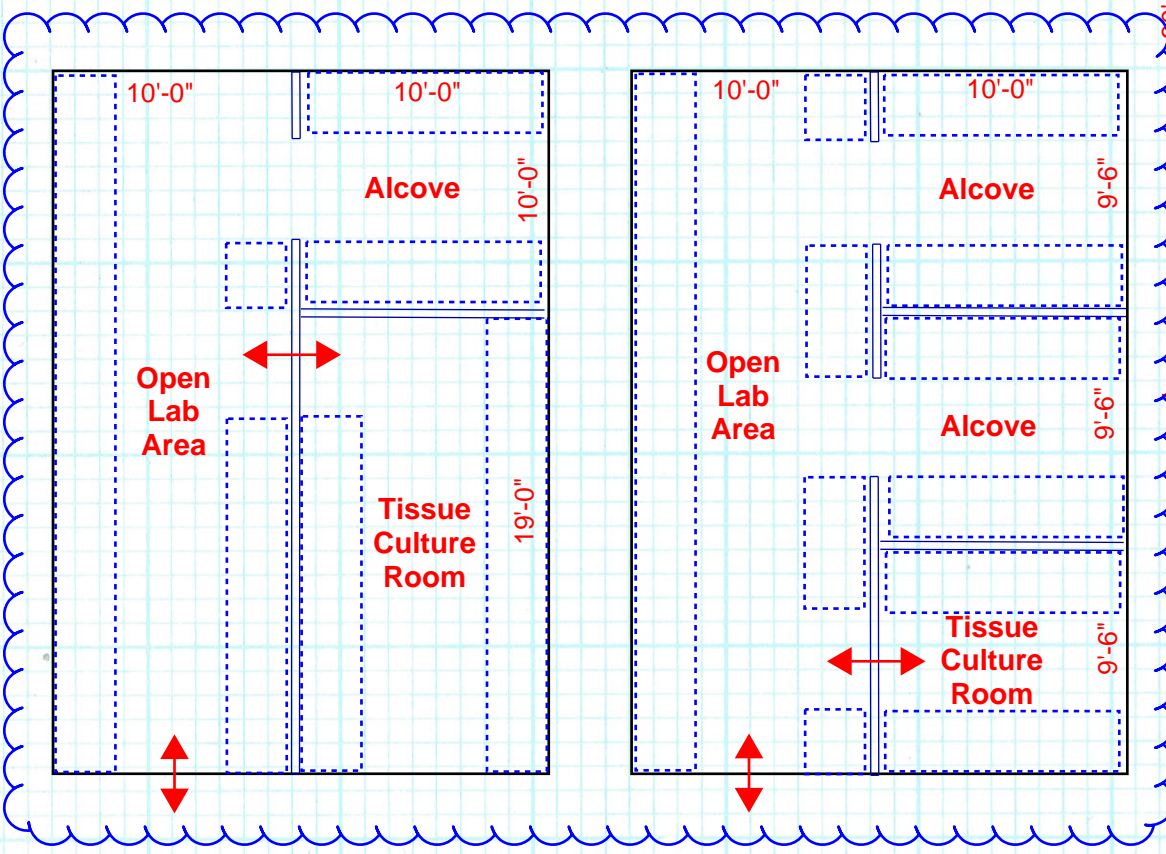
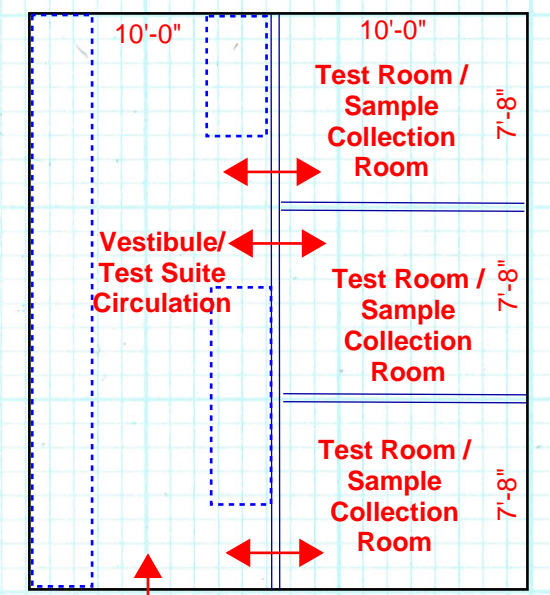
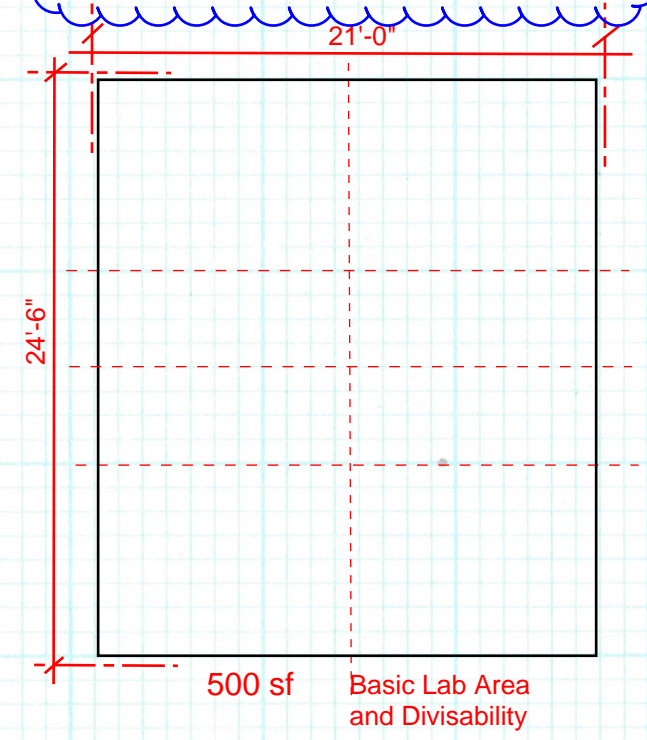
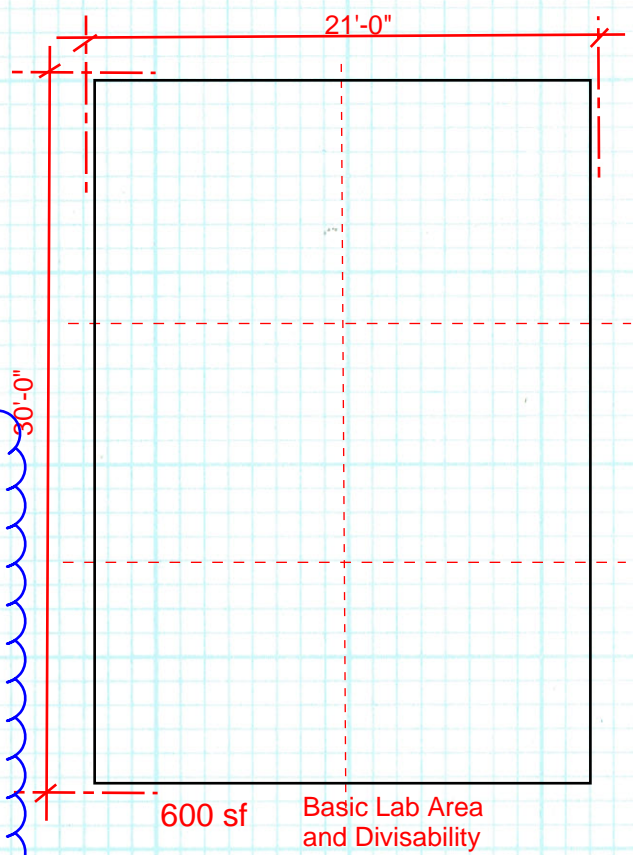
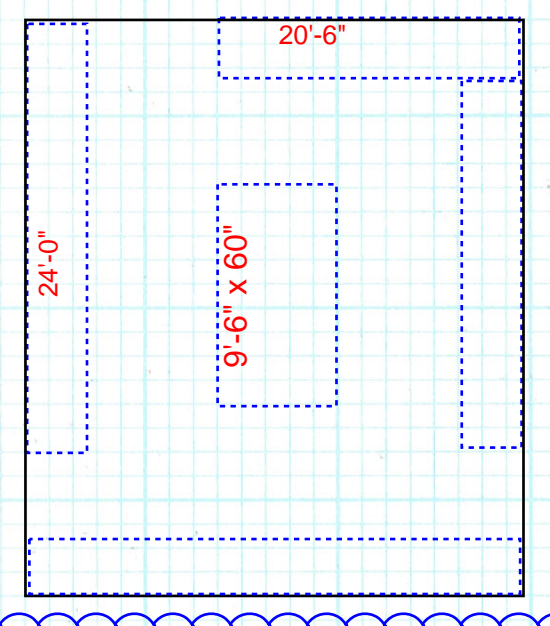
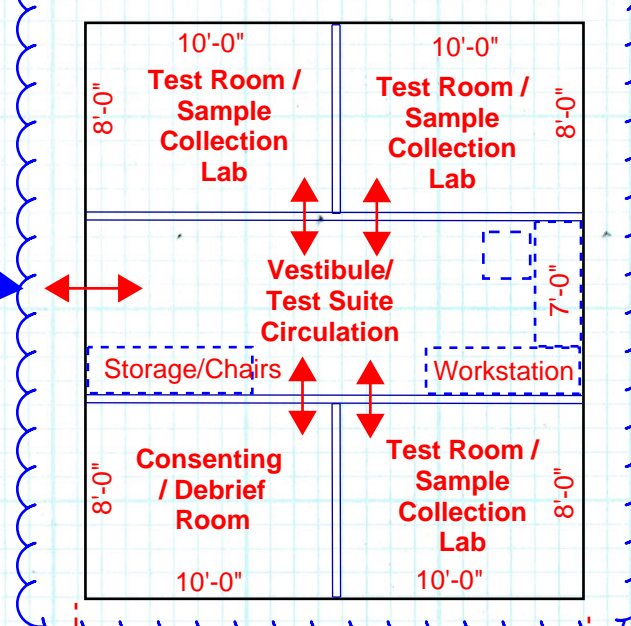


#52 - Biological-Chemical Analysis Lab (600 sf)

#54 - Wet Air Lab (500 sf)

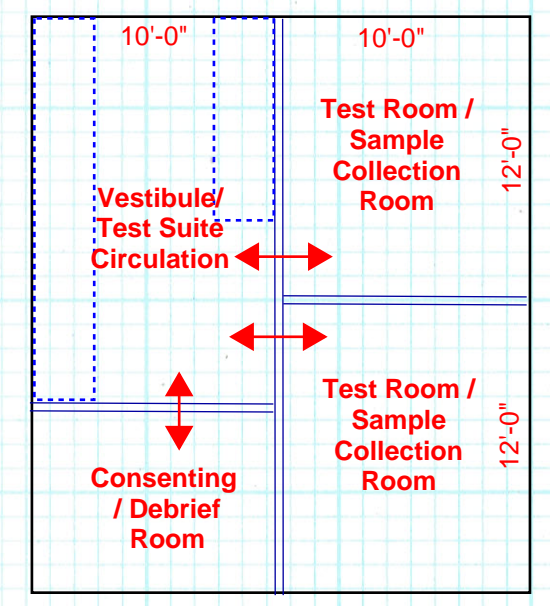


This lab model was added after the meeting to attempt to find other ways to best match the HSRI vision for the Wet-Air Lab. Options will be developed for options that accommodate a Consenting / Debrief Room



These were the two lab models which most closely matched the HSRI vision for the Biological - Chemical Analysis Lab. Options will be developed for each of the two models

These were the two lab models which most closely matched the HSRI vision for the Wet-Air Lab. Options will be developed for options that accommodate a Consenting / Debrief Room



#52 - Biological-Chemical Analysis Lab (600 sf)

#54 - Wet Air Lab (500 sf)