

**Participants:**

UCM: Allison Costa, Maggie Saunders, Nancy Burke, Bobbi Henderson, Karina Diaz Rios

Design Team: Matt Pietras, Bryan Irwin, Matthew Gadie, Martin Gicklhorn

**Meeting Notes:** (See also Program Plan Options drawing associated with these Mtg. Notes which graphically depicts program requirements)

1. **Space Allocation:**

- A. 550 SF – Includes a Kitchen and an Eating Area
- B. Nutrition Lab also gets a 180 SF lab support space (and combination of lab and lab support space can be combined and configured as required).

2. **Lab Functional Areas:** The Lab is to have 4 functional areas:

- A. **Workstation Area:** Currently 2 Grad Students and 2 Undergrads. Significant staff growth is not anticipated in the near future. Design this area in new lab for 3-4 grad students and 2 undergrads.
- B. **Enclosed Area:** A separate room with a small handwash sink, a small freezer, a scale, a desk, file cabinets. The room will be used to take biometrics and samples as well as for interviews. (The lab prefers to have its own sample/exam space rather than to use the two shared rooms managed by HSRI.)
- C. **Conference Area:** A round table for 6-8 with a ceiling microphone and possibly also set up for a flat panel TV and videoconferencing (to be confirmed).
- D. **Research Kitchen / Food Studio:** A kitchen that is more like a residential kitchen than a commercial kitchen. There should be a refrigerator, a small cook stove, a sink, a microwave oven and a small dining table. Photos and videos are taken in the kitchen and there are typically 2-3 people working in the kitchen.
  - 1. No special analytical equipment is anticipated for the Research kitchen other than a standard food scale and a camera used for making videos.

3. **Lab Users:**

- 1. This lab will be for a single PI. It is not a shared use area.
- 2. This lab will have visitors in the form of focus groups of 6-8 people and they sometimes bring their children. The focus group meetings take place during regular school hours as well as evenings and weekends.
- 3. In the near term the lab focus group volunteers will mostly be students but, it is anticipated that community members will be coming to the lab in the future. Future focus groups are anticipated to include low-income people.

4. Adjacencies:

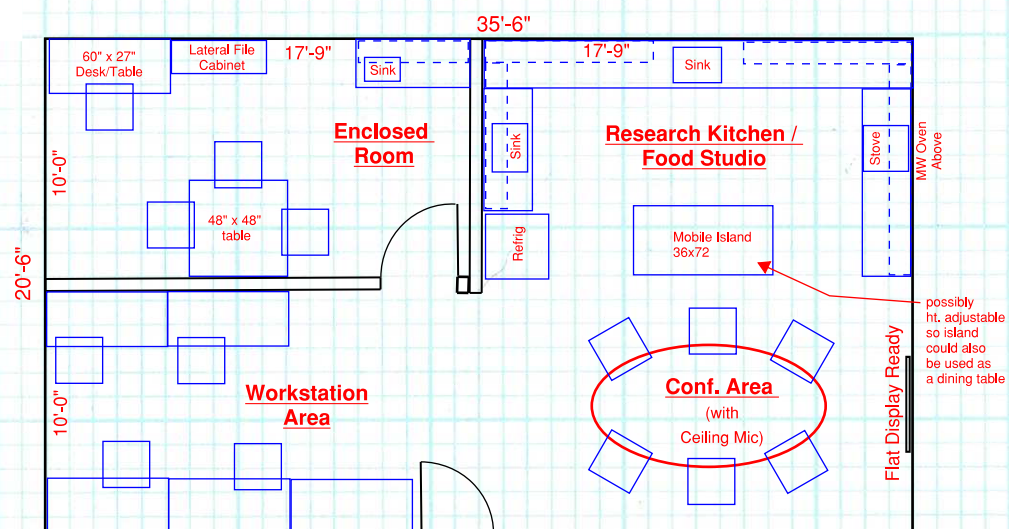
1. During off hours, visitors are met by lab staff somewhere near the building entrance.
2. Because the lab will have visitors, it should be easy to find in the building.
3. Ideally the lab would be located near other Public Health Labs and HSRI but direct adjacencies are not required.
4. It is preferred that this lab is on the same floor as the PI office for the lab.

End of Meeting Notes

**Agenda for Program BO Meeting #2:**

1. Review Meeting notes and Program Plan Options
2. Lab users and other stakeholders to provide comments on Notes and Program Plan
3. Discuss how to incorporate comments into the Program Plan

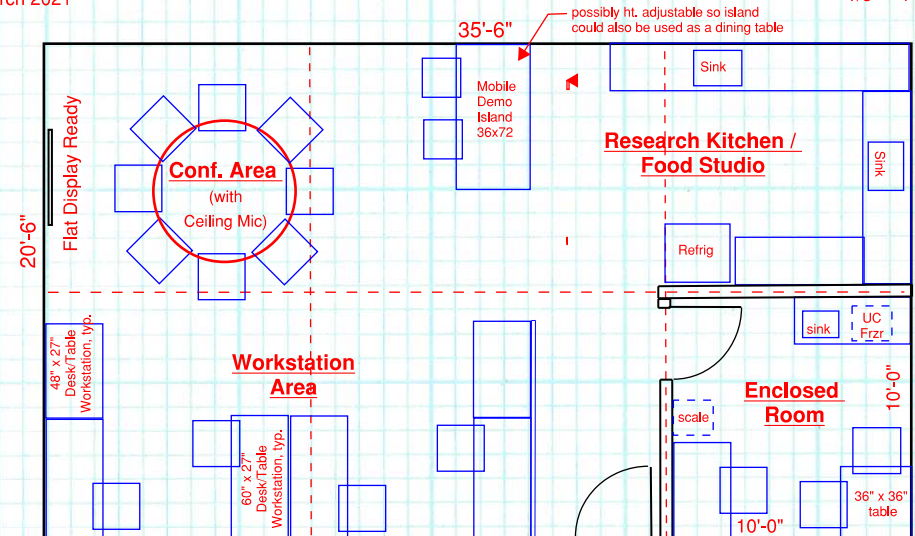
End of Agenda for BO Meeting #2



#59 PH Nutrition Lab + Associated Wet Lab Support (#60A) - 730 ASF) - Opt. A

24 March 2021

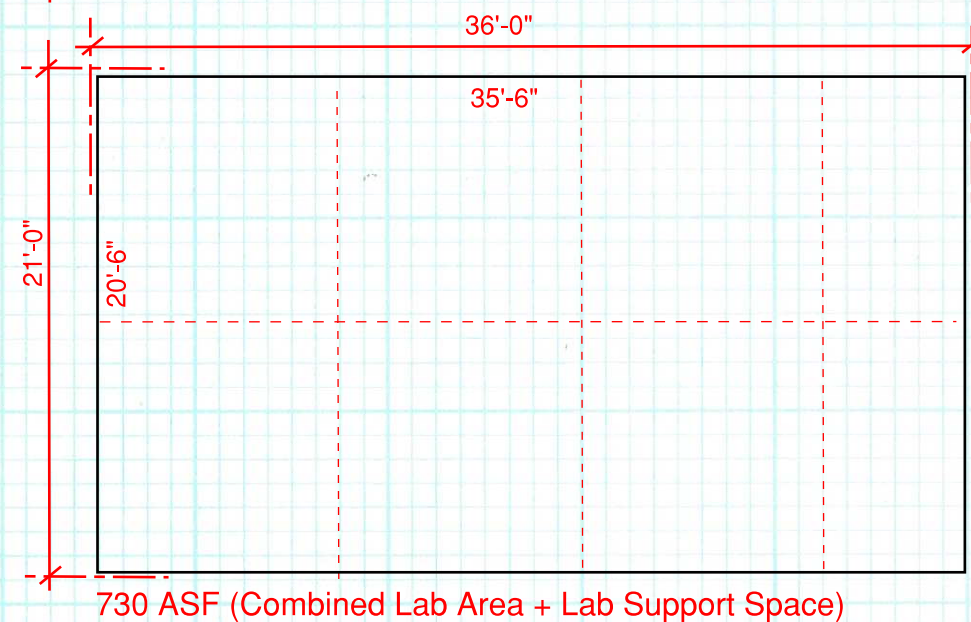
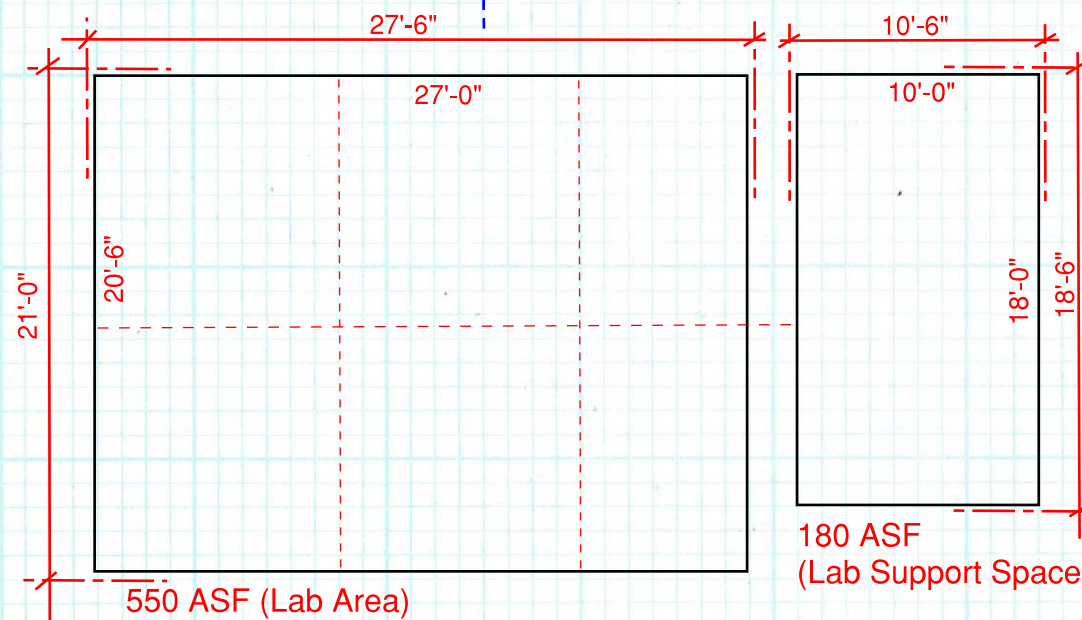
1/8" = 1'-0"



#59 PH Nutrition Lab + Associated Wet Lab Support (#60A) - 730 ASF) - Opt. B

24 March 2021

1/8" = 1'-0"



**UCM HBS-ME Building Programming**

#59 PH Nutrition Lab - (550 SF)

+ (1) #60A PH Wet Lab Support Space - (180 SF)

24 March 2021

1/8" = 1'-0"

NEED TO INCLUDE HER -80 REFRIGERATOR TOO.

KITCHEN SPACE SHOULD BE SMALLER. KITCHEN CAN BE SIMPLER - NOT A U SHAPE BUT JUST AN L.

ASSUME 3 COMPARTMENT SINK IS ALSO NEEDED FOR WASHING, RINSING, AND SANITIZING. AND SEPARATE ONE HANDWASHING.

SHOW AS DOTTED LINE - PERHAPS FUTURE CONSIDERATION.

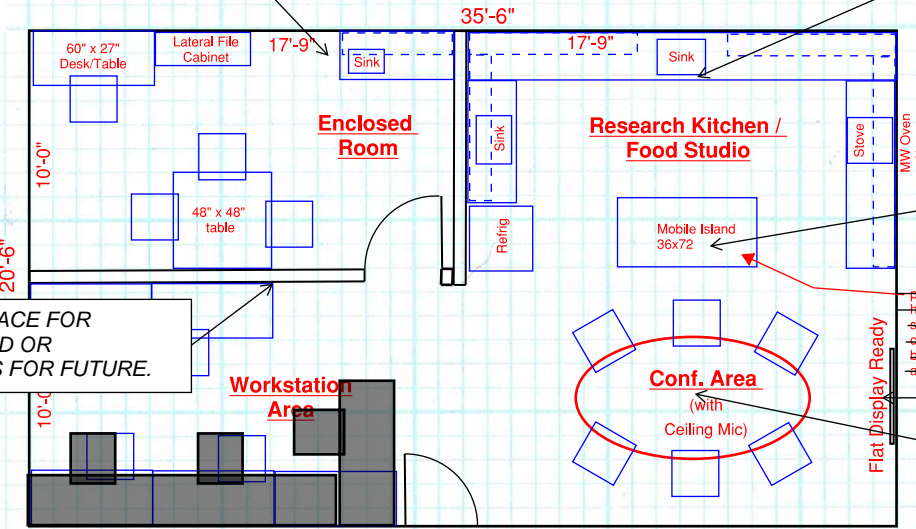
POWER/DATA ONLY. REMINDER THIS FLAT PANEL IS FOR PI TO PROVIDE ONLY.

SHOW AS RECTANGLE TABLE.

180 ASF (Lab Support Space)

550 ASF (Lab Area)

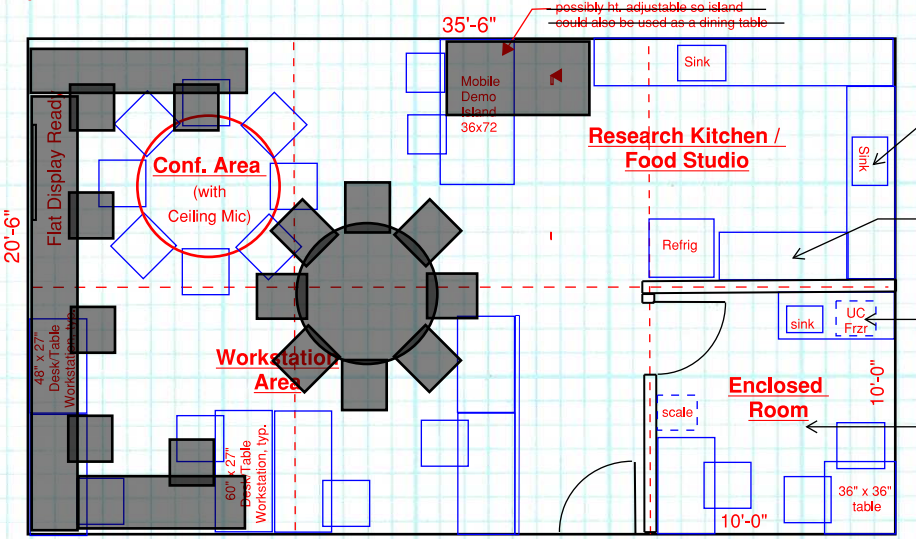
FREE UP SPACE FOR WHITEBOARD OR BOOKCASES FOR FUTURE.



#59 PH Nutrition Lab + Associated Wet Lab Support (#60A) - 730 ASF) - Opt. A

24 March 2021

1/8" = 1'-0"



#59 PH Nutrition Lab + Associated Wet Lab Support (#60A) - 730 ASF) - Opt. B

24 March 2021

1/8" = 1'-0"

SEE SINK COMMENTS ABOVE.

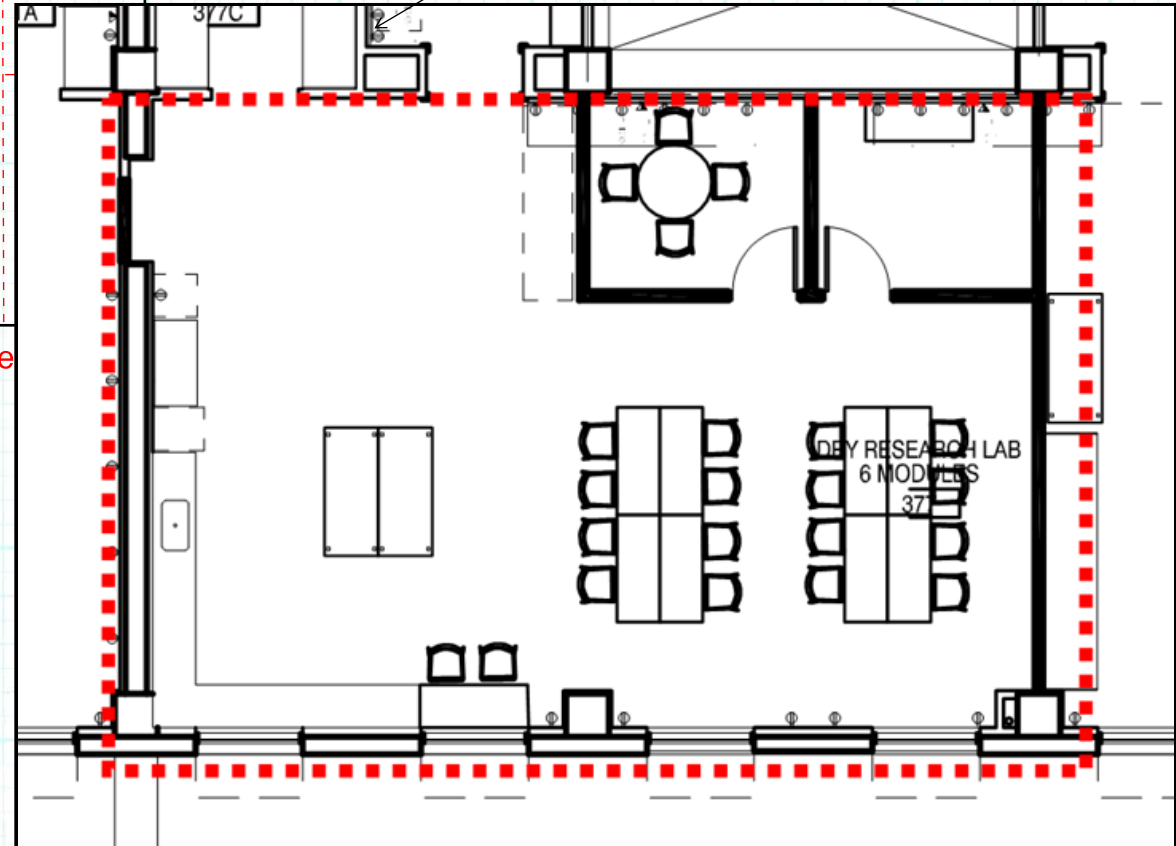
IDENTIFY STOVE/MICROWAVE LOCATION.

-80 REFRIGERATOR NEEDS TO BE INCLUDED.

THIS ENCLOSED ROOM SHOULD CONTAIN THE SAME ITEMS AS IDENTIFIED IN OPTION A. PERHAPS ROOM NEEDS TO BE LARGER.

730 ASF (Combined Lab Area + Lab Support Space)

HERE IS THE LAYOUT WE ARE WORKING ON W/ KARINA, IN HER TEMP SPACE IN SE1. PLEASE NOTE THIS SPACE IS FAR LARGER AND IS ACTUALLY CURRENTLY A WET LAB.



**UCM HBS-ME Building Programming**

#59 PH Nutrition Lab - (550 SF)

+ (1) #60A PH Wet Lab Support Space - (180 SF)

24 March 2021

1/8" = 1'-0"